

WET KIT ASSEMBLY

HYDRAULIC TIPPER UNIT



KIT REF.N

J2G018025

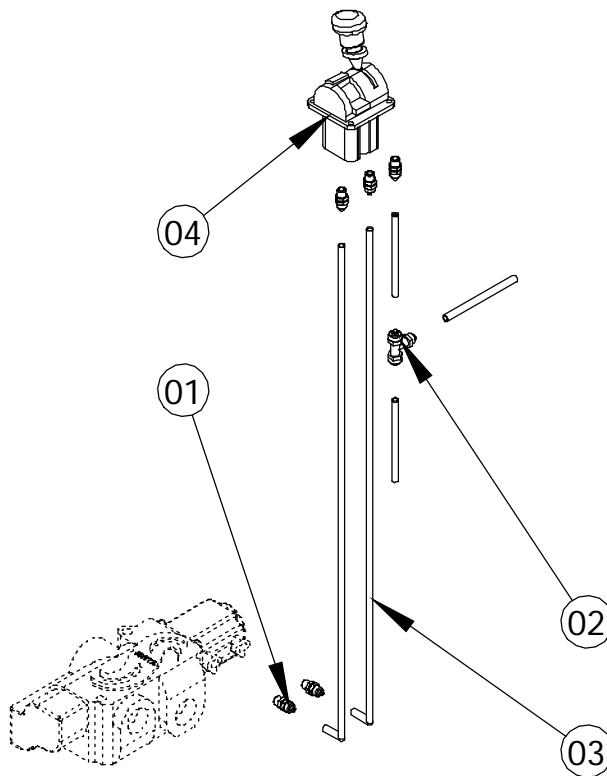
CYLINDER REF

TRUCK/TRAILER

PNEUMATIC CAB CONTROL KIT

MAX PRESSURE

12 bar



COMPONENTS LIST

POS.	CODE	DESCRIPTION	QTY	POS.	CODE	DESCRIPTION	QTY
01	DB05G00180002	Straight air fitting G1/8" hose Ø6mm	08				
02	DB09000060002	T air fitting G1/8" hose Ø6mm	01				
03	D7K025004F001	Rilsan hose 6x4, L=25mt	01				
04	D902G018305	Pneumatic control, tristable 3-way	01				

TECHNICAL NOTES AND SPECIFICATIONS

The above wet kit is an aggregate of hydraulic components and devices. They have been selected to be installed into a machinery to operate one or more actuators. The most common applications are dumpers and their secondary equipments or handling equipments for things such as loading cranes, hook lifters, skip loaders, moving floors etc. Components included in the above wet kit are not for continuous working if not differently specified. They are not suitable for potentially explosive atmosphere or environment with risk of fire. They are not suitable to be installed on equipments to lift people.

The above wet kit has been sized for the cylinder of reference so different cylinders with similar oil consumption, can be operated by means of the above wet kit.

The above parts list is reporting just the wet kit main components. For a detailed bill of material, please ask to our Sales Department.

Where existing, it is prohibited to tamper the original setting of the relief valve on tipping valves or distributors. **Important:** the relief valve must not be intended as an alternative of safety valves which must be treated as a separate device to be included in the machinery.

Always check correct rotation sense of the pump prior to install it on the Power Take Off.

Avoid elbows and restrictions on the hoses if not included in the above hydraulic scheme.

It is recommended to check periodically cleanliness of oil and filter. Replace filters at least every six months.

Air supplying range for pneumatic components is between 3 and 8 bars with a maximum flow admitted of 0,5 Nlt/min. Working temperature range for hydraulic oil: from -10° to +80° C. Further specification available on the installation and maintenance manual.

REMARKS

[2011.02.10] [2011.02.10]

REVISIONS

01

02

03

HC-Pneumatic D9-6

Comando Pneumatico Pneumatic Control



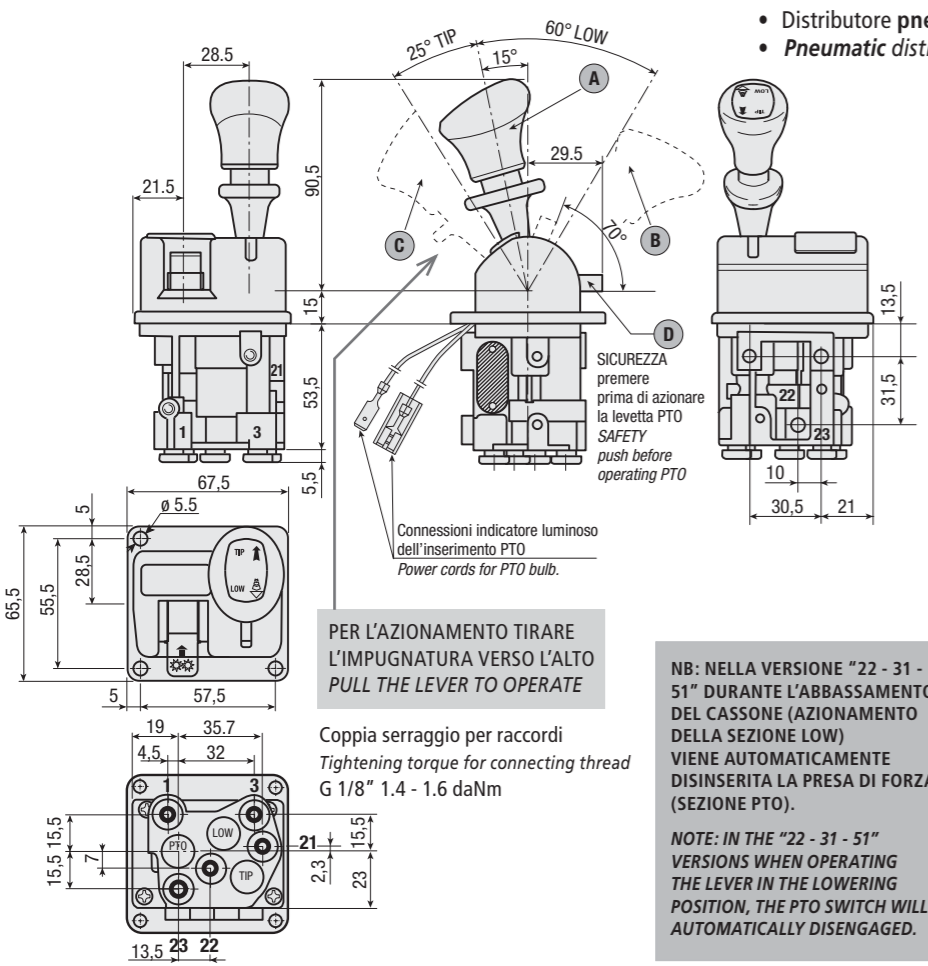
Tre Utilizzi
Three Sections

CODICE DI ORDINAZIONE - DECODING

D902 . GXXX . 3 . 00

CODICE BASE/BASIC CODE ATTACCHI/PORTS NUMERO DELLE SEZIONI/SECTIONS NUMBER SERIALE/SERIAL

CARATTERISTICHE TECNICHE - TECHNICAL SPECIFICATIONS			
Fluido utilizzato Working medium	aria/air	Temperatura di impiego Operative temperature	- 40° + 80°C
Pressione di esercizio Working pressure	max 12 bar	Passaggio nominale Nominal diameter	Ø 4 mm
Tensione di esercizio Operating voltage	24 V cc (DC)	Contatti Contacts	Normalmente aperti Normally open



PER L'AZIONAMENTO TIRARE L'IMPUGNATURA VERSO L'ALTO
PULL THE LEVER TO OPERATE

Coppia serraggio per raccordi
Tightening torque for connecting thread
G 1/8" 1.4 - 1.6 daNm

NB: NELLA VERSIONE "22 - 31 - 51" DURANTE L'ABBASSAMENTO DEL CASSONE (AZIONAMENTO DELLA SEZIONE LOW) VIENE AUTOMATICAMENTE DISINSERITA LA PRESA DI FORZA (SEZIONE PTO).

NOTE: IN THE "22 - 31 - 51" VERSIONS WHEN OPERATING THE LEVER IN THE LOWERING POSITION, THE PTO SWITCH WILL AUTOMATICALLY DISENGAGED.

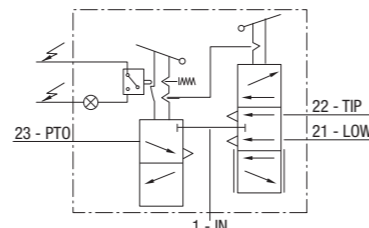
- Distributore pneumatico con comando di discesa proporzionale.
- Pneumatic distributor with proportional lowering control.

POSIZIONE LEVA - LEVER POSITION

A Riposo (con arresto) - Rest position (with lock)
 B Azionamento SEZ. 21 - Operation PORT 21
 C Azionamento SEZ. 22 - Operation PORT 22
 D Azionamento SEZ. 23 (con arresto) - Operation PORT 23 (with stop)

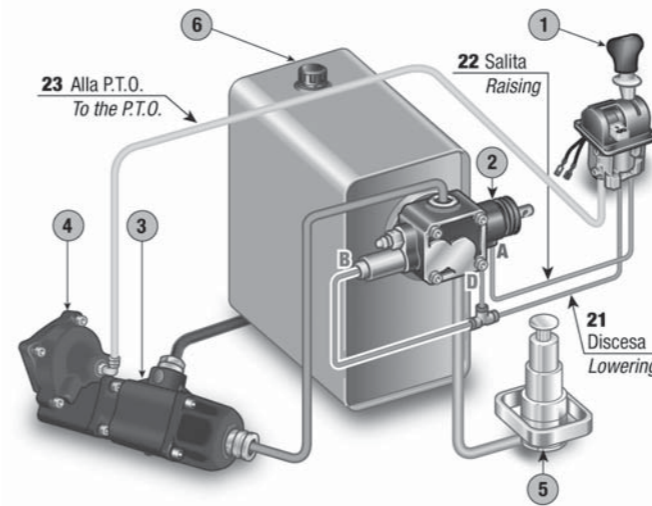
ATTACCHI ARIA - AIR PORTS

1 Alimentazione (IN) G 1/8" Compressed air supply
 21 Abbassamento cassone (LOW) G 1/8" Control lowering
 22 Sollevamento cassone (TIP) G 1/8" Control tipping
 23 Inserimento presa di forza (PTO) G 1/8" Power take off engagement
 3 Scarico (EX) M5 Free exhaust



ESEMPIO SCHEMA DI MONTAGGIO - EXAMPLE OF HOOK-UP

- 1 COMANDO PNEUMATICO - PNEUMATIC CONTROL
- 2 DISTRIBUTORE - DISTRIBUTOR
- 3 POMPA - PUMP
- 4 PRESA DI FORZA - POWER TAKE OFF
- 5 CILINDRO - CYLINDER
- 6 SERBATOIO OLIO - OIL TANK

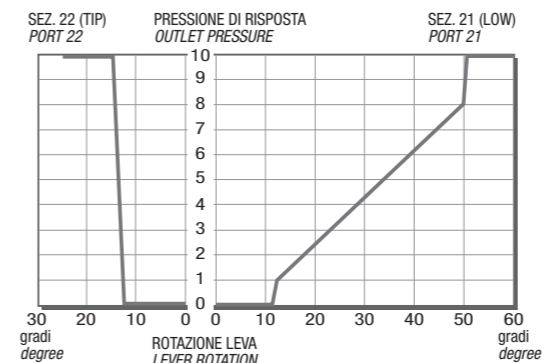


KIT RICAMBI NM 3 / NM 3 SPARE PARTS KIT	
CODICE CODE	DESCRIZIONE DESCRIPTION
DK0B15	Kit leva PTO con disinnesto PTO lever kit with disengagement
DK0B16	Kit leva PTO senza disinnesto PTO lever kit without disengagement
DK0B17	Kit impugnatura NM Lever kit NM
DK0B14	Leva completa di camma Lever with cam

POSSIBILI VERSIONI - OPTIONS

CODICE DISTRIBUTORE DISTRIBUTOR CODE	NOTE - DESCRIPTION
D902G018304 Discesa progressiva Proportional lowering	Leva monostabile (al rilascio la leva torna in posizione di riposo). Monostable lever (when not manually operated the lever returns to neutral position).
D902G018302 Discesa progressiva Proportional lowering	Leva bistabile (ritorna al rilascio solo dalla posizione di salita). In posizione LOW si ha il disinnesto automatico PTO. Bistable lever (the lever returns to release only from TIP position). With automatic PTO disengagement when body is lowering.
D902G018303 Discesa progressiva Proportional lowering	Leva tristabile (a tre posizioni fisse: riposo, discesa, salita). In posizione LOW si ha il disinnesto automatico PTO. Tristable lever (three stable positions: rest, low, tip). With automatic PTO disengagement when body is lowering.
D902G018306 Discesa progressiva Proportional lowering	Leva monostabile (al rilascio la leva torna nella posizione di riposo). In posizione LOW si ha il disinnesto automatico PTO. Monostable lever (when not manually operated, the lever returns to neutral position). With automatic PTO disengagement when body is lowering.
D902G018307 Discesa progressiva Proportional lowering	Leva bistabile (ritorna al rilascio solo dalla posizione di salita). Bistable lever (the lever returns to release only from TIP position).
D902G018305 Discesa progressiva Proportional lowering	Leva tristabile (a tre posizioni fisse: riposo, discesa, salita). Tristable lever (three stable positions: rest, low, tip).

DIAGRAMMA - DIAGRAM



CARATTERISTICA CON PRESSIONE DI ALIMENTAZIONE = 10 bar
DIAGRAM REFERRED TO SUPPLY PRESSURE = 10 bar