



HYDRAULIC TIPPER UNIT

KIT REF.N

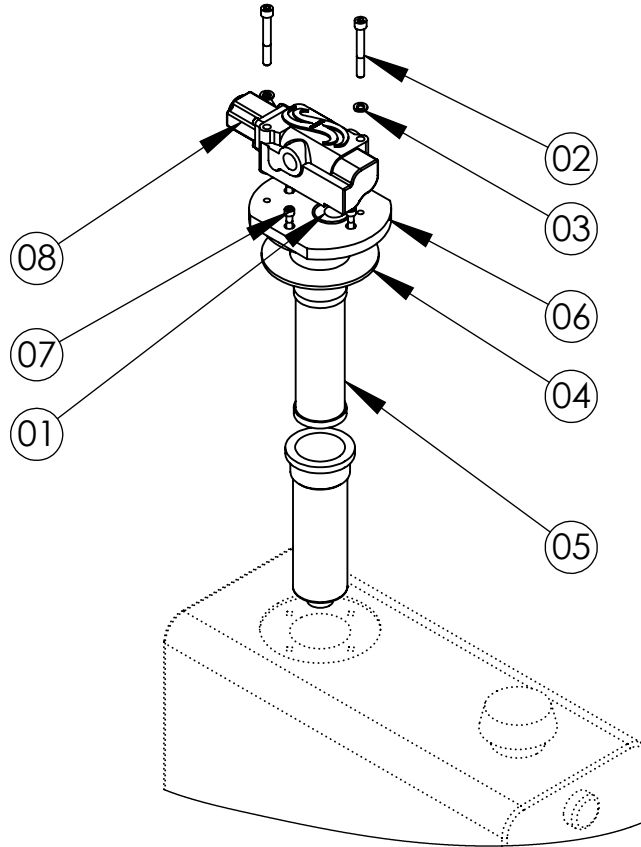
CYLINDER REF

MAX PRESSURE

J3G034011

TRAILER
TIPPING VALVE KIT

200 bar



Components List

POS. CODE	DESCRIPTION	QTY	POS. CODE	DESCRIPTION	QTY
01	D22046001 Seal O-ring Ø46 OR133	01	05	DK0E11 Oil filter with cartridge	01
02	D603M0010G006 Screw TCEI M10x80 ISO 4762	02	06	DK0528 Plate fitting valve	01
03	D617M00101 Washer grower M10 UNI 1751	02	07	D603M0008G005 Screw TCEI M8x30 ISO 4762	04
04	DK0E03 Polyurethan seal 155x80x5mm	01	08	U01G034P20001 Valve STV13 G3/4" TVM200 max oil flow 130lt./min	01

DATA 2009/10/26

CODICE CLIENTE-NAZ. 1222000720-DE

DATA ORDINE

REVISIONE

REVISIONE

DISEGNATO

CONTROLLATO

HT-Valve Distributore Idraulico

Tipping Valve

TIPO DI COLLEGAMENTO AL SERBATOIO - TYPE OF CONNECTION TO TANK

1 T1

120 Nm. ±12

2 T

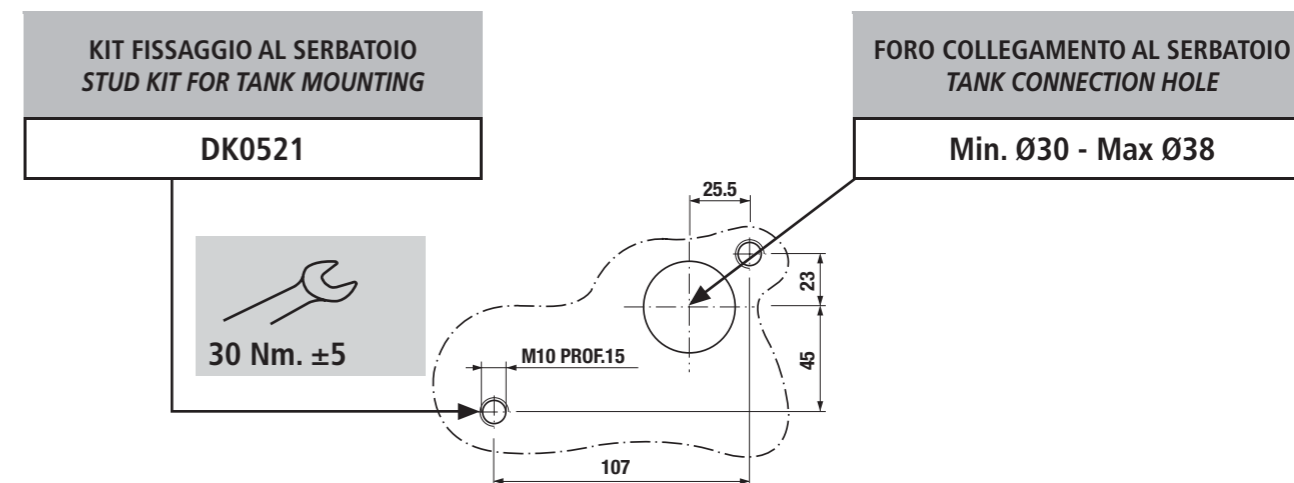
Versione STANDARD - STAFFAGGIO al SERBATOIO
STANDARD Version - TANK MOUNTING

Versione IN LINEA
IN-LINE Version

3

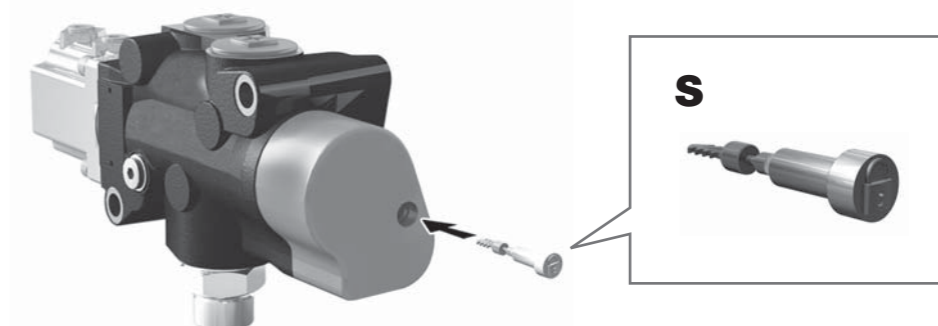
Versione APERTA - STAFFAGGIO CON SCARICO
SUPPLEMENTARE
OPEN Version - MOUNTING WITH ADDITIONAL EXHAUST

DIMENSIONI FLANGIATURA - FLANGE DIMENSIONS



VALVOLA DI MASSIMA - RELIEF VALVE

IL DISTRIBUTORE VIENE FORNITO CON LA VALVOLA DI MASSIMA TARATA AL VALORE RICHIESTO E SIGILLATA IN MODO IRREMOVIBILE.
 THE DISTRIBUTOR IS SUPPLIED WITH RELIEF VALVE SET AT REQUIRED VALUE AND SEALED IN IRREMOVABLE WAY.



! La valvola di massima è protetta contro ogni manomissione dal sigillo di sicurezza "S" che una volta rotto o mancante fa decadere la garanzia del distributore. Il sigillo non è fornibile come ricambio.

! The relief valve is protected against any sort of tampering by safety seal "S" that, once broken or missing, invalidates the manufacturer's guarantee of distributor. The seal is not available as a spare part.