

# TECHNICAL DATA



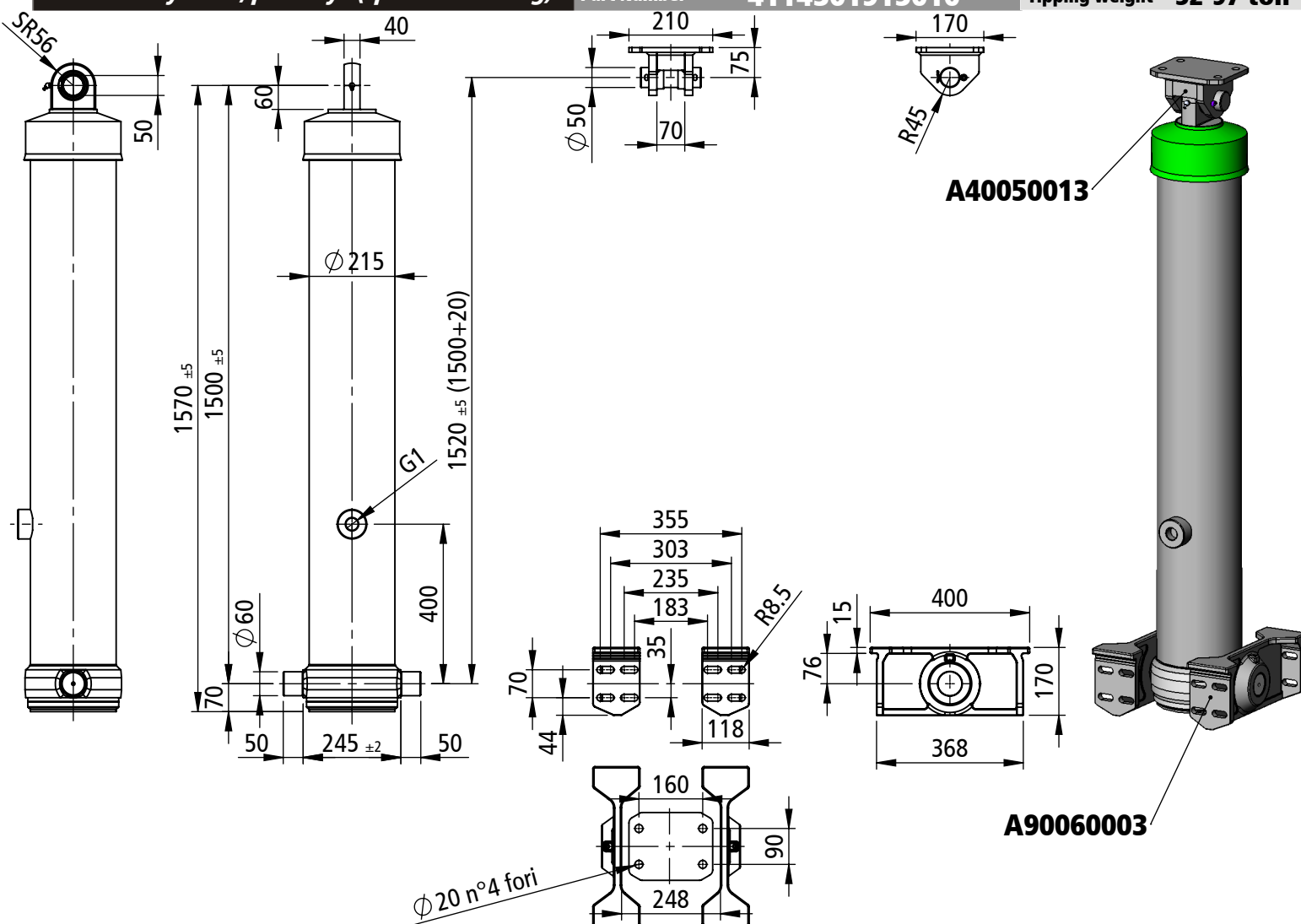
Front end cylinder, pins - eye (spherical bearing)

Part Number

**4114301915010**

Tipping weight

**52-97 ton**



mounting dimension	1500 mm + 20 mm min pull out					total stroke	6150 mm			max pressure	200 bar	
model: HF 6150 191 5	code: 4114301915010					weight: 280 kg	HS Penta					
extension	1	2	3	4	5	-	-	-	-	-	-	number of stages: 5
diameter [mm]	191	169	149	129	111	--	--	--	--	--	--	
stroke [mm]	1220	1225	1230	1235	1240	--	--	--	--	--	--	total: 6150 mm
thrust [kN]	573	449	349	261	194	--	--	--	--	--	--	
oil [dm³]	34.9	27.5	21.4	16.1	12.0	--	--	--	--	--	--	total: 111.9 dm³

## TECHNICAL NOTES AND SPECIFICATIONS

- The normal application of telescopic cylinder is to lift up tipping bodies, loaded with different materials, and consequently discharge this material whilst the cylinder is extended all along its stroke.
- The body weight plus the max payload are the max tipping weight that can be raised by the cylinder. This value, calculated at the max pressure, is a rough indication of the tipping power of the cylinder and must be used as a first criteria for the selection of the cylinder. The real tipping mass can only be calculated by the design engineer of the dump truck, and must take into account the geometry of the dump body and operating conditions. Never exceed the maximum thrust.
- Never exceed maximum pressure.
- The cylinder has been designed for loads along the longitudinal axis: the cylinder is a lifting device only and may not be used as structural member or be subject to side load.
- Chrome coating type CRN (40 h corrosion test ISO 9227-rating 9 ISO 10289 / minimum thickness: 15 µm) on rod stage Ø111.
- H.S.PENTA warranty does not apply to any kind of corrosion of coated or non-coated parts. See terms of warranty.
- Maximum extension speed less than 0.2 m/s.
- Hydraulic oil temperature admitted between -40°C and +100°C.
- In case the cylinders must be stored, do not remove the package. Store them in a dry place, not exposed to rain. Do not store the cylinders for more than 6 (six) months.
- Further specifications see mounting instructions, hydraulic oil specification sheet, user & maintenance manual.
- Critical buckling load 316 kN fully extended cylinder.

### REMARKS

[2011.05.24] [2011.05.24]

Last stage Ø111 chromed (Elem. term. Ø111 cromato)

### REVISIONS

2011.09.12 - Modificata altezza ent. olio da 200 a 400	01
2012.03.28 - Modificato codice da 4114301915001 ad attuale	02
2013.01.28 - Aggiornato cartiglio	03
	04

# TECHNICAL DATA



**Penta**  
Interpump Hydraulics International



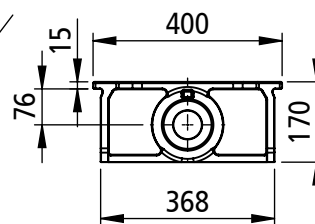
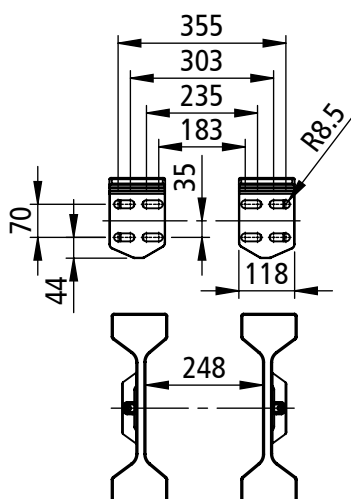
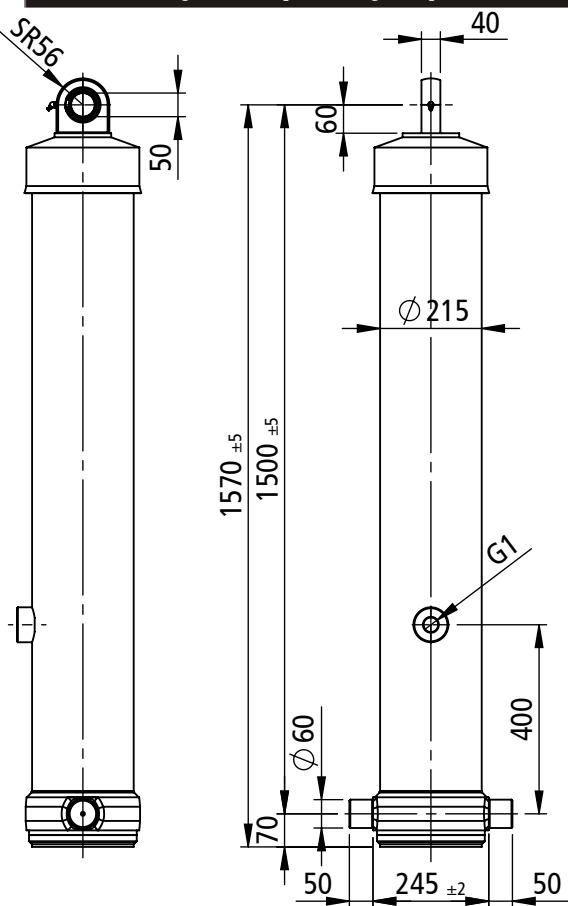
Front end cylinder, pins - eye (spherical bearing)

Part Number

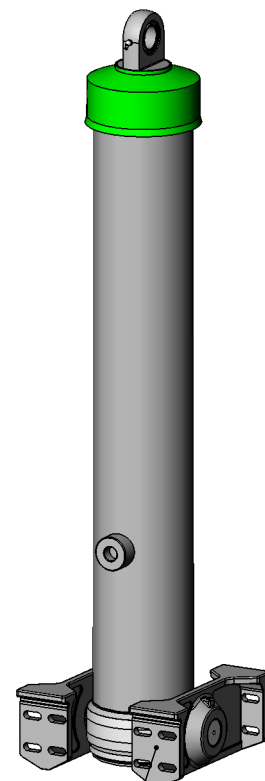
**4114301915010**

Tipping weight

**52-97 ton**



**A90060003**



mounting dimension

**1500 mm + 20 mm min pull out**

total stroke

**6150 mm**

max pressure

**200 bar**

model: HF 6150 191 5

code: 4114301915010

weight: 280 kg

HS Penta

extension	1	2	3	4	5	-	-	-	-	--	--	number of stages: 5
diameter [mm]	191	169	149	129	111	--	--	--	--	--	--	
stroke [mm]	1220	1225	1230	1235	1240	--	--	--	--	--	--	total: 6150 mm
thrust [kN]	573	449	349	261	194	--	--	--	--	--	--	
oil [dm³]	34.9	27.5	21.4	16.1	12.0	--	--	--	--	--	--	total: 111.9 dm³

## TECHNICAL NOTES AND SPECIFICATIONS

- The normal application of telescopic cylinder is to lift up tipping bodies, loaded with different materials, and consequently discharge this material whilst the cylinder is extended all along its stroke.
- The body weight plus the max payload are the max tipping weight that can be raised by the cylinder. This value, calculated at the max pressure, is a rough indication of the tipping power of the cylinder and must be used as a first criteria for the selection of the cylinder. The real tipping mass can only be calculated by the design engineer of the dump truck, and must take into account the geometry of the dump body and operating conditions. Never exceed the maximum thrust.
- Never exceed maximum pressure.
- The cylinder has been designed for loads along the longitudinal axis: the cylinder is a lifting device only and may not be used as structural member or be subject to side load.
- Chrome coating type CRN (40 h corrosion test ISO 9227-rating 9 ISO 10289 / minimum thickness: 15 µm) on rod stage Ø111.
- H.S.PENTA warranty does not apply to any kind of corrosion of coated or non-coated parts. See terms of warranty.
- Maximum extension speed less than 0.2 m/s.
- Hydraulic oil temperature admitted between -40°C and +100°C.
- In case the cylinders must be stored, do not remove the package. Store them in a dry place, not exposed to rain. Do not store the cylinders for more than 6 (six) months.
- Further specifications see mounting instructions, hydraulic oil specification sheet, user & maintenance manual.
- Critical buckling load 316 kN fully extended cylinder.

### REMARKS

[2012.01.28] [2012.01.28]

Last stage Ø111 chromed (Elem. term. Ø111 cromato)

### REVISIONS

.	01
	02
	03
	04

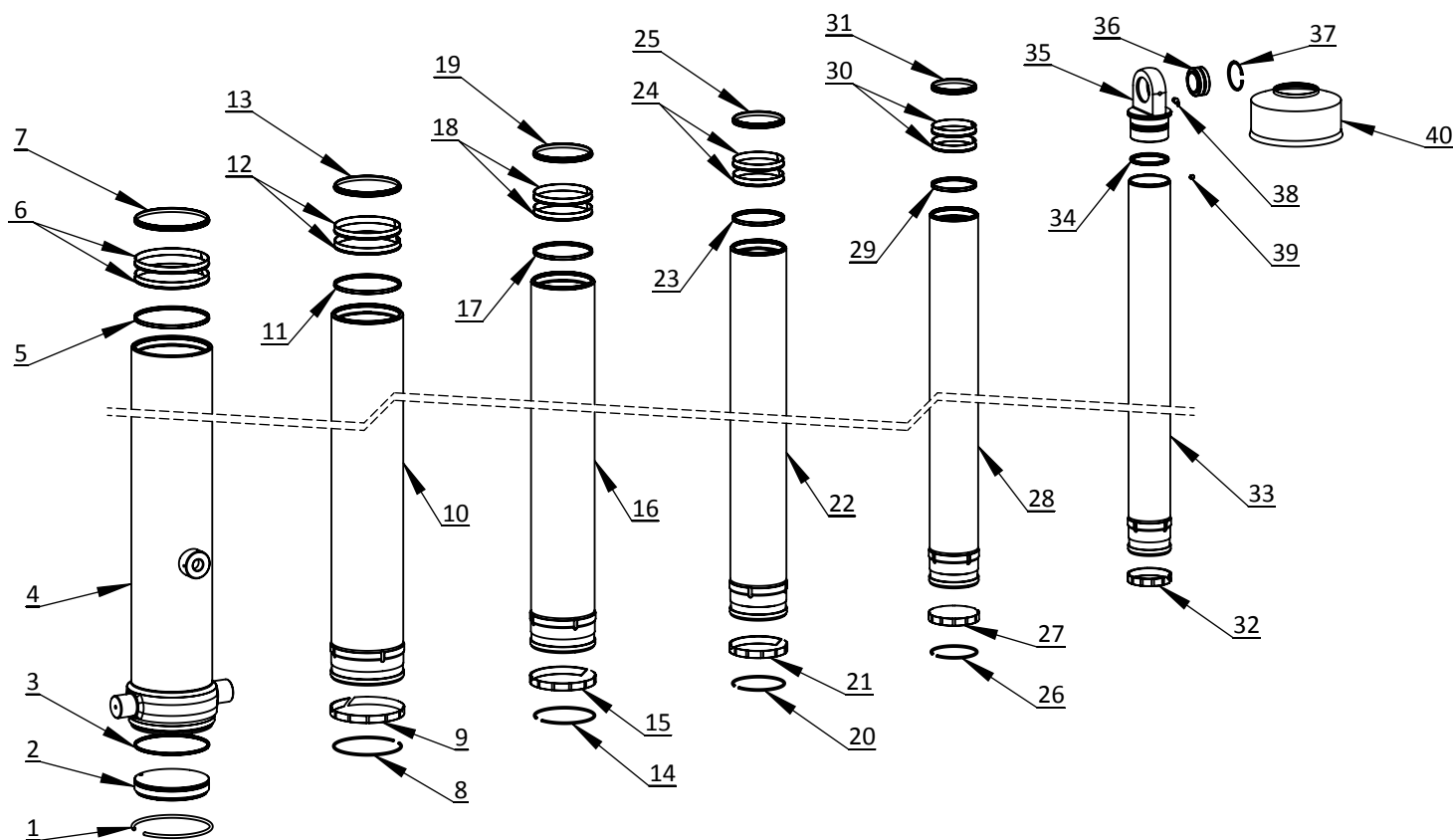


CODE

MODEL

**4114301915010**

**FRONT MOUNT RAM - HF 6150 191 5**



## SPARE PARTS LIST

Item	Code	Description	Q.ty
1	B711910080001	Steel piston ring Ø216 S=8	1
2	B40191001	Ram base	1
3	D23191001	Ram base seal	1
4	B114301910001	Base tube	1
5	D21191001	Polyurethane seal Ø191	1
6	D15191001	Upper delrin guide Ø191	2
7	D34191001	Scraper ring Ø191	1
8	B701910050001	Steel piston ring Ø191 S=5	1
9	D17191001	Lower delrin guide Ø191	1
10	B214301910001	Telescopic stage Ø191	1
11	D21169001	Polyurethane seal Ø169	1
12	D15169002	Upper delrin guide Ø169	2
13	D34169001	Scraper ring Ø169	1
14	B701690050002	Steel piston ring Ø169 S=5	1
15	D17169001	Lower delrin guide Ø169	1
16	B214301690001	Telescopic stage Ø169	1
17	D21149002	Polyurethane seal Ø149	1
18	D15149002	Upper delrin guide Ø149	2
19	D34149001	Scraper ring Ø149	1
20	B701490050002	Steel piston ring Ø149 S=5	1

Item	Code	Description	Q.ty
21	D17149001	Lower delrin guide Ø149	1
22	B214301490001	Telescopic stage Ø149	1
23	D21129001	Polyurethane seal Ø129	1
24	D15129002	Upper delrin guide Ø129	2
25	D34129001	Scraper ring Ø129	1
26	B701290050002	Steel piston ring Ø129 S=5	1
27	D17129001	Lower delrin guide Ø129	1
28	B214301290001	Telescopic stage Ø129	1
29	D21111001	Polyurethane seal Ø111	1
30	D15111001	Upper delrin guide Ø111	2
31	D34111001	Scraper ring Ø111	1
32	D17111001	Lower delrin guide Ø111	1
33	B314301110002	Rod stage Ø111	1
34	D23111002	Terminal head seal	1
35	B50111001	Terminal head	1
36	D624000501	Spherical bearing Ø50	1
37	D620000751	Seeger ring I/75	1
38	D623100101	Grease nipple M10x1 45°	1
39	D608M0010G004	Grub screw M10x12 UNI 5927	1
40	BD0196001	Protection cap	1

**GUIDE KIT: K141001915001 / SEAL KIT: K241001915001**

**REMARKS**

**[2012.12.13]**

**REVISIONS**

2013.01.08 - Eseguita nuova tavola

01

02

03